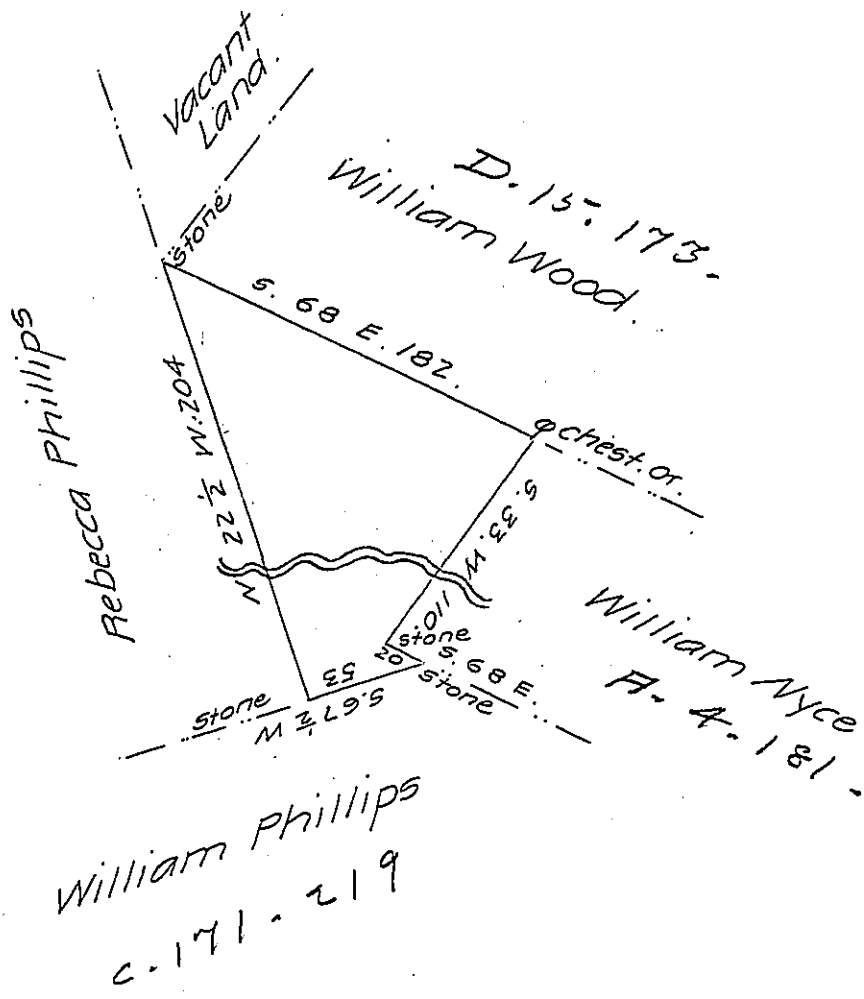


Lehman -  
PIKE ✓



By Virtue of a warrant dated the 9th day of August 1848 order  
of Survey rec'd the 12th day of August 1848. Surveyed the 18th day of  
August 1848 to Robert Lyons the above described Tract of Land situ-  
ate in Lehman Township Pitre County adjoining lands surveyed  
to Rebecca Phillips and others (being unimproved.) Containing  
eighty acres fourteen perches and allowance of six per cent for  
Roads &c.

John T. Cross D.S.

To John Laporte Esq  
Surveyor General.

IN TESTIMONY that the above is a copy of the original remaining on file in  
the Department of Internal Affairs of Pennsylvania, made  
conformably to an Act of Assembly approved the 16th day of  
February, 1833, I have hereunto set my Hand and caused  
the Seal of said Department to be affixed at Harrisburg,  
this twenty-seventh day of March 1908

*Henry Howell*  
Secretary of Internal Affairs.